

WHERE DO I NEED TO GO ?

We may see you in hospital if you are an inpatient and have been referred by a consultant or nursing staff or in various locations across the county for outpatients.

You will be told where your appointment will be, at the time your appointment is made,

We will endeavour to offer you an appointment closest to you, or if urgent you will be offered the next available appointment which may not be available at the nearest location.

WHAT IF I NEED TO CANCEL MY APPOINTMENT?

Please call as soon as you know if you are not able to attend an appointment as we may be able to offer it to someone else.

ADVICE AND SUPPORT

We aim to involve you in your treatment and will provide advice and support to help you with your condition.

QUALITY SERVICE

We monitor and regularly review our quality standards.



**Northamptonshire Healthcare
NHS Foundation Trust
Adult Speech and Language Therapy
Highfield Clinical Care Centre**

**Cliftonville
Northampton**

NN1 5BU

www.nhft.nhs.uk/salt
01604 745046



If you require this leaflet in other formats or languages please contact PALS: 0800 917 8504

এই লফিলটেট যদি আপনার অন্য কোনো ফরম্যাটে বা ভাষায় প্রয়োজন হয়, তবে অনুগ্রহ করে 0800 917 8504 নম্বরে পালস এর সাথে যোগাযোগ করুন

Jei šią skrajutę norite gauti kitu formatu ar kalba, kreipkitės į PALS: 0800 917 8504

Jeżeli są Państwo zainteresowani otrzymaniem tych informacji w innym formacie lub języku, prosimy o kontakt z PALS pod numerem telefonu 0800 917 8504.

Dacă aveți nevoie de acest prospect în alte formate sau limbi, vă rugăm să contactați PALS: 0800 917 8504

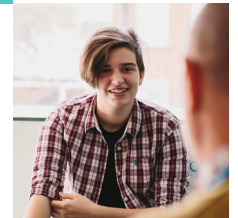
Если Вы хотели бы получить данную брошюру на другом языке или в другом формате, просим обращаться в PALS (Информационная служба для пациентов) по 0800 917 8504.

© 2018 Northamptonshire Healthcare NHS Foundation Trust All Rights Reserved

#weareNHFT

NHS
Northamptonshire Healthcare
NHS Foundation Trust

ADULT SPEECH AND LANGUAGE THERAPY SERVICE



 **01604 745046**
 nhft.nhs.uk/salt



**MAKING A
DIFFERENCE
FOR YOU,
WITH YOU**

WHAT IS SPEECH AND LANGUAGE THERAPY?

We assess and treat acquired speech, language and communication problems in people over 16 to help them communicate better. We also work with people who have eating and swallowing problems.

If you have a learning disability you will see our specialist speech language therapist (SLT) in the Learning Disabilities team.

WE WORK WITH ADULTS WHO HAVE:

- difficult producing and using speech
- difficulty understanding and using language
- difficulty with feeding, chewing and/or swallowing
- a stammer
- a voice problem
- laryngectomy/ tracheostomy patients

HOW LONG BEFORE I SEE SOMEONE?

Once we have received your referral you will be seen within 13 weeks as an outpatient.



HOW LONG WILL MY APPOINTMENT BE?

Your initial appointment will usually be between 45 minutes to 60 minutes long.

Your therapist will discuss if speech therapy is appropriate and what it will involve. The amount of therapy you receive will vary according to the reason you have been referred and the treatment available.

WHAT WILL HAPPEN AT MY APPOINTMENT?

You will be seen by a qualified speech and language therapist (SLT). They will assess your difficulties and discuss and agree on the best course of treatment with you.



I THINK I HAVE A DIFFICULTY, WHO CAN REFER ME?

You can refer yourself for a communication or speech appointment, or ask your GP.

If you need a voice referral we will need an ENT report before an appointment can be made.

If you have a swallowing problem we need a written referral from your GP or consultant.